

R4-EM (9 Series) Electromechanical Rotary Latch

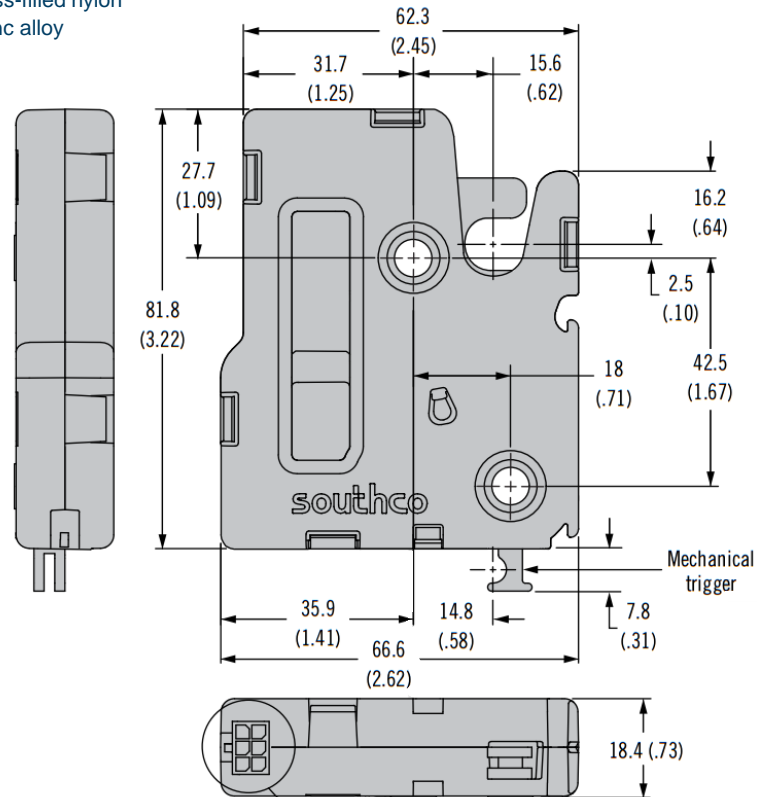
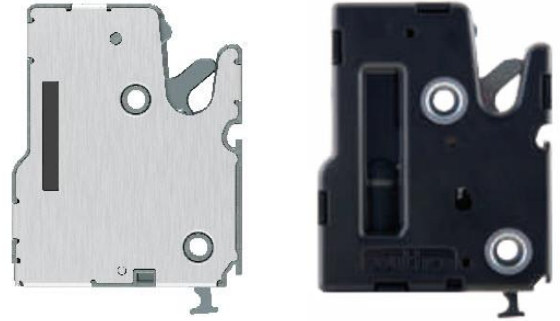
Concealed cam . Door and trigger sensor
Electronic access with internal motor control

Features

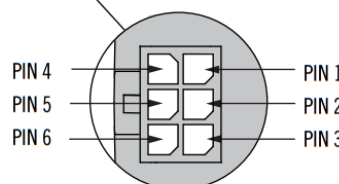
- Push-to-close, electronic release
- High electromechanical release load
- Minimal power draw
- Integrated connector
- Extended housing option for added security
- Door and trigger sensor
- Microswitch to detect latch status
- Mechanical over-ride with integrated cable bracket
- 12 V to 24 V operations
- Efficient DC gear motor actuation
- Detent mechanism for pull-open function
- Simple two-hole installation

Material

- Top housing: PC/ABS or Aluminum
- Bottom housing: PC/ABS or Zinc, die cast
- Pivot pins: Steel, zinc plated
- Cam, trigger: Steel, sealed
- Springs: Stainless steel passivated
- Trigger interlock lever: Glass-filled nylon
- Bistable spring retainer: Zinc alloy
- Drive cam: Acetal, black
- Output cam: Acetal, white



Latch Wiring Connections



Electrical Specifications

- Recommended operating voltage: 12 to 24 VDC
- Typical operating current:
 - 12 V Models: Less than 500mA

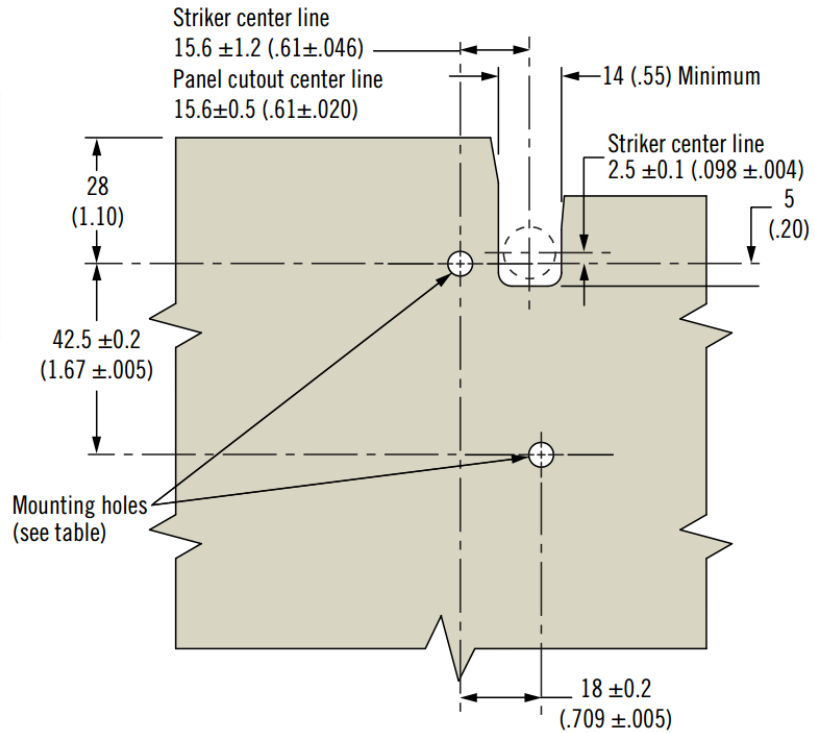
Latch Connector Pin Assignment:

- PIN 1: Ground (-)
- PIN 2: Power (+)
- PIN 3: Control signal
- PIN 4: Latch status
- PIN 5: None
- PIN 6: Door status

Installation

Panel Preparation

Base Mounting Style	Recommended minimum mounting hole
1/4-20 thread	Ø 7.2 (.283)
M6 thread	Ø 6.9 (.272)
Thru hole	Ø 7.6 (.300)



R4 - EM - 9 T B A - 150 - P

- T** Trigger Styles
- A** Auto relock, rear trigger, with kick-out spring
 - D** Delayed relock, rear trigger, with kick-out spring
 - P** Delayed relock, rear trigger, pull to open

- A** Alternate Configurations
- None** Plastic housing
 - 5** Metal Housing
- B** Base Mounting Style
- 1** 1/4 - 20 thread
 - 2** M6 thread
 - 3** Ø 7.0 (.27) thru hole

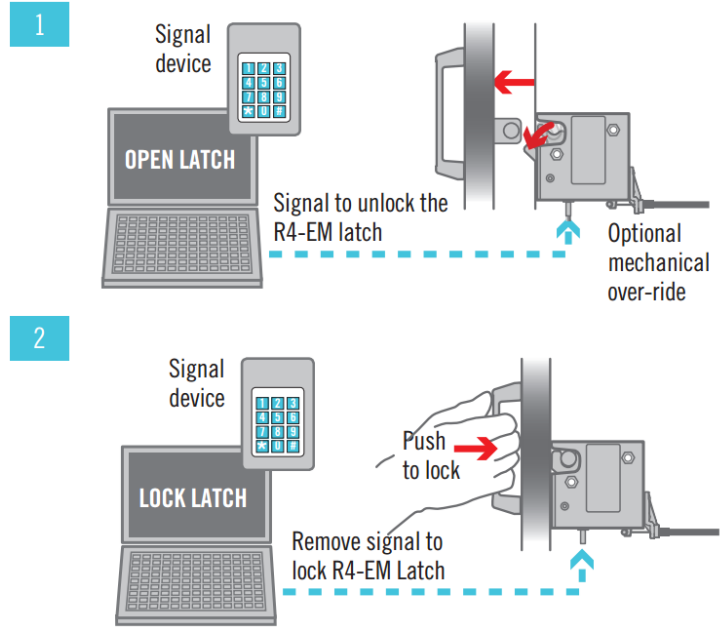
- P** Packaging Options
- None** Individually packaged
 - 1** Bulk packaged

R4-EM Electronic Rotary Latch

Operating instructions

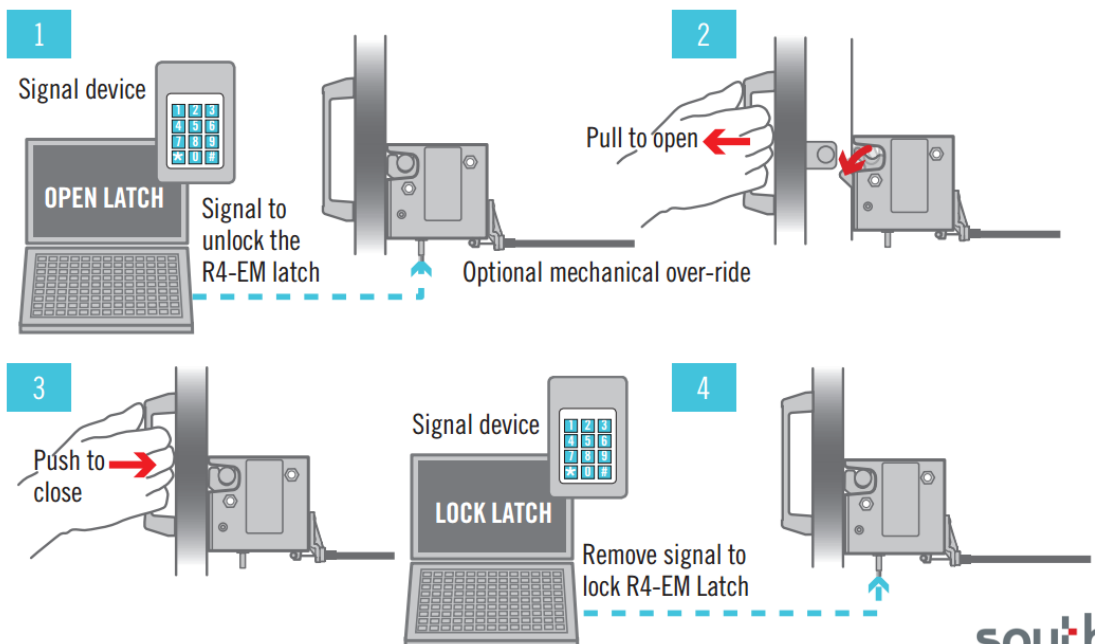
Operation – Auto reload

1. The signal unlocks the R4-EM latch and releases the spring loaded cam which rotates out to push a lightweight door open. The mechanism will cycle through unlatched then re-latched state automatically, regardless of input signal on time.
2. Push door closed to engage striker after unlock time has expired. Striker will rotate cam to closed position



Operation – Delayed reload

1. The signal unlocks the R4-EM latch leaving a biased closed door in the closed position. The unlock time is controlled by the access control device.
2. Manually pull door/striker free from R4-EM latch.
3. Manually push door closed. Striker will rotate cam to closed position, however latch will remain unlocked and can be re-opened as long as signal is present.
4. After accessing the door, the signal can be removed to re-lock the R4-EM. This can be done with the door in the open or closed position.



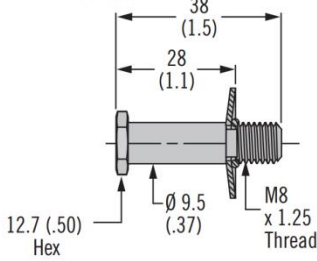
R4-EM Electronic Rotary Latch

Strikers - Cable mounting kits

Striker Bolt - Large

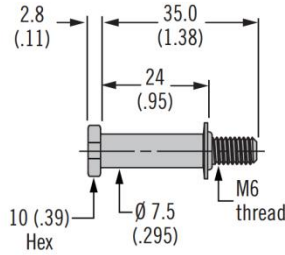
Part number R4-90-121-10

R4-90-121-20



Striker Bolt - Small

Part number R4-90-511-20

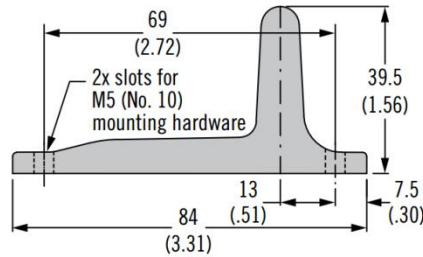
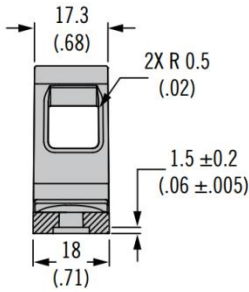


Material

- Striker bolts: Stainless steel or steel, zinc plated
- Cast strikers: Zinc alloy
- Cable mounting kits: Glass-filled nylon, black

Cast Striker with Door Sensor Part number R4-90-804-10

Cast Striker without Door Sensor Part number R4-90-800-10



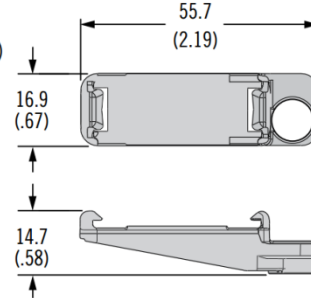
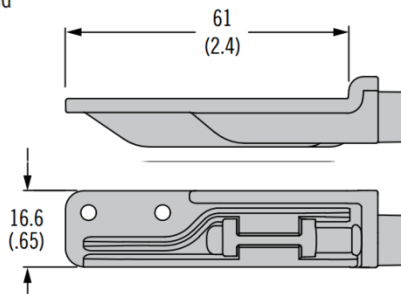
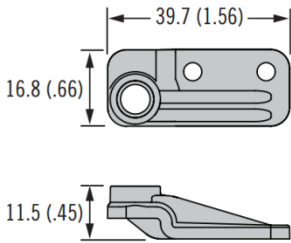
Cable Mounting Kit

Part number R4-EM-52 – Rivets included

Part number R4-EM-72 – Screws included

Part number R4-EM-87 – Rivets included

Part number R4-EM-952



	Striker Bolt		Cast Striker		Cable Mounting Kit			
	R4-90-121-XX	R4-90-511-20	R4-90-800-10	R4-90-804-10	R4-EM-52	R4-EM-72	R4-EM-87	R4-EM-952
R4-EM-9	✓		✓	✓				✓
R4-EM-8	✓		✓	✓				
R4-EM-5 & 7	✓		✓		✓		✓	
R4-EM-4 & 6		✓				✓		
R4-EM-1 & 2	✓		✓		✓		✓	

southco®

We are proud to be Southco's authorized distributor of over 20 years